

# Single Plan for Student Achievement

(Site Plan)

## Site Data

- » Academics (Cruncher, CDE)
- » Discipline (Student Services)
- » Attendance Trends (SASI)
- » CELDT (C&I Mary)

## Site Goals

## Site Plan:

Changes that will improve student learning

How? + Who? + How Much?

Research- Based Programs

Key Players

Categorical \$ Plus ...

# API

## State Accountability: Academic Performance Index (API)

Number of Students included in the 2006 API Growth	API				Met Growth Target		
	2006 Growth	2005 Base	2005-06 Growth Target	2005-06 Growth	Schoolwide	Comparable Improvement (CI)	Both Schoolwide and CI
957	825	845	A	-20	Yes	Yes	Yes

### Similar Schools

Median API	
2006 Growth	2005 Base
834	827

Click on the median value heading to link to the list of 2005 API Base similar schools. This list contains schools which were selected specifically for the reported school for the 2005 API Base report.

## Subgroups

Ethnic/Racial	Number of Students Included in 2006 API	Numerically Significant in Both Years	Subgroup API				Met Subgroup Growth Target
			2006 Growth	2005 Base	2005-06 Growth Target	2005-06 Growth	
African American (not of Hispanic origin)	29	No					
American Indian or Alaska Native	6	No					
Asian	167	Yes	901	886	A	15	Yes
Filipino	8	No					
Hispanic or Latino	122	Yes	686	679	1	7	Yes
Pacific Islander	8	No					
White (not of Hispanic origin)	611	Yes	843	874	A	-31	Yes
<b>Socioeconomically Disadvantaged</b>	113	Yes	667	643	1	24	Yes
<b>English Learners</b>	82	No					
<b>Students with Disabilities</b>	43	No					

# Just For Kids California

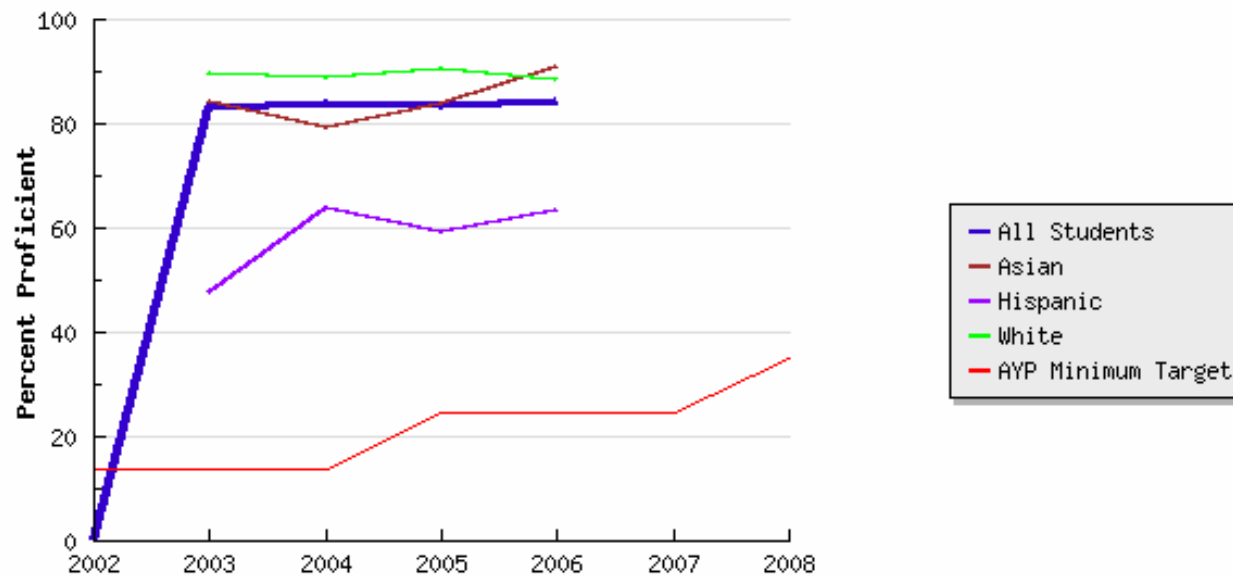
<http://www.jftk-ca.org>

Login: Davis

Password: djusd44

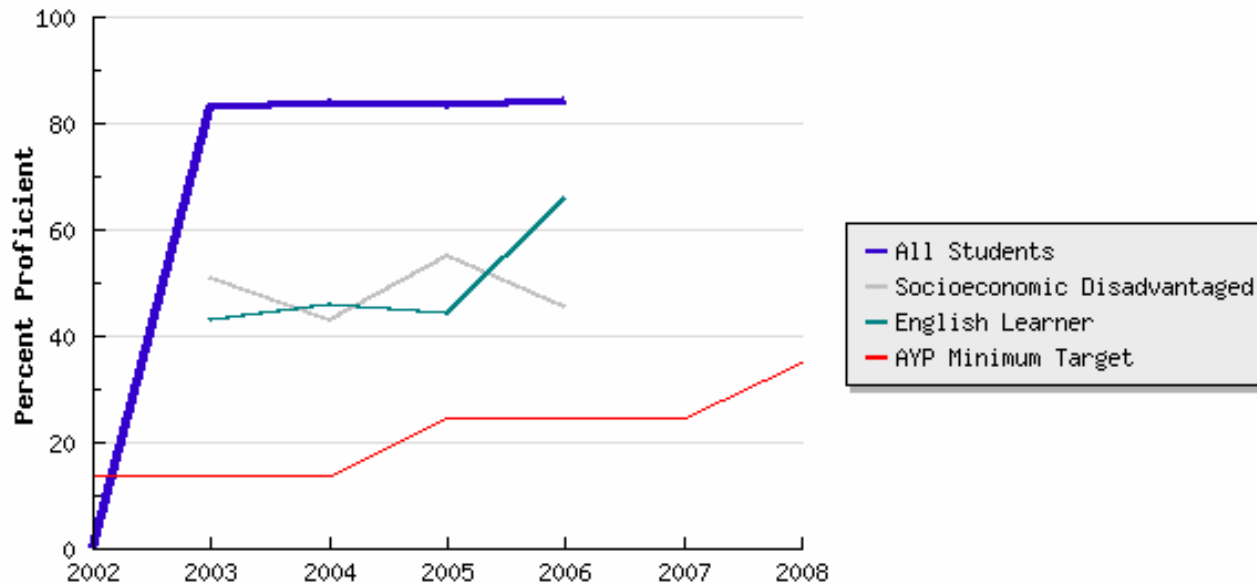
# Davis Senior High, Davis Joint Unified Language Arts Subgroup Performance Summary

Update	Subgroup	All Students	Asian	Hispanic	White	Socioeconomic Disadvantaged	English Learner
	Number of Students	535	84	70	350	67	74
	Percent Enrollment	100.0%	15.7%	13.1%	65.4%	12.5%	13.8%
	Include Subgroup	<input checked="" type="checkbox"/>	<input checked="" type="checkbox"/>	<input checked="" type="checkbox"/>	<input checked="" type="checkbox"/>	<input type="checkbox"/>	<input type="checkbox"/>



# Davis Senior High, Davis Joint Unified Language Arts Subgroup Performance Summary

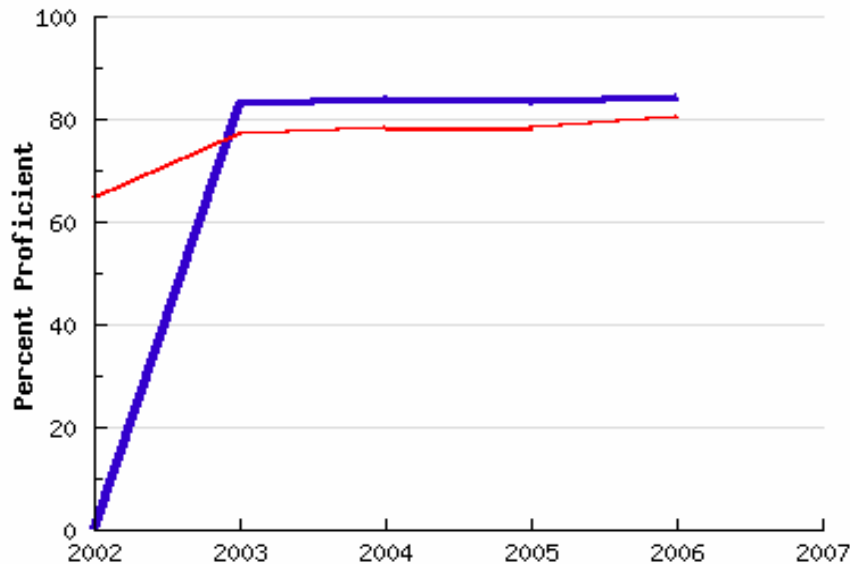
	Subgroup	All Students	Asian	Hispanic	White	Socioeconomic Disadvantaged	English Learner
Update	Number of Students	535	84	70	350	67	74
	Percent Enrollment	100.0%	15.7%	13.1%	65.4%	12.5%	13.8%
	Include Subgroup	<input checked="" type="checkbox"/>	<input type="checkbox"/>	<input type="checkbox"/>	<input type="checkbox"/>	<input checked="" type="checkbox"/>	<input checked="" type="checkbox"/>



# Davis Senior High, Davis Joint Unified Language Arts Subgroup Comparables Performance

Update

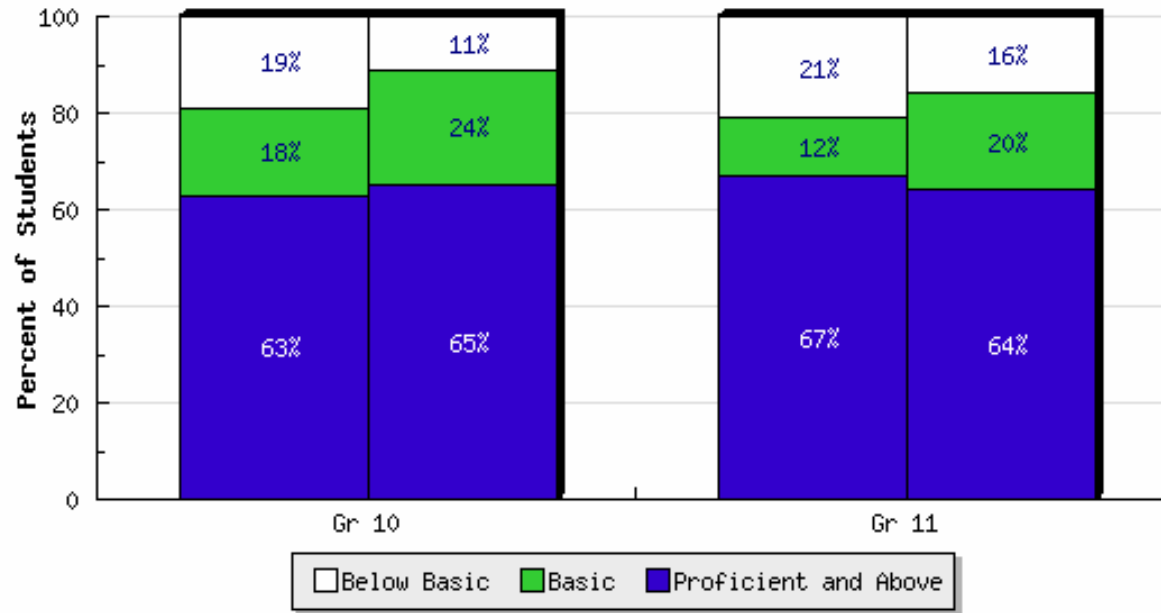
Subgroup	All Students	Asian	Hispanic	White	Socioeconomic Disadvantaged	English Learner
Number of Students	535	84	70	350	67	74
Percent Enrollment	100.0%	15.7%	13.1%	65.4%	12.5%	13.8%
Select Subgroup	<input checked="" type="radio"/>	<input type="radio"/>	<input type="radio"/>	<input type="radio"/>	<input type="radio"/>	<input type="radio"/>



Click here to see list of top 10 comparable schools

— Davis Senior High  
— Average of Top 10 comparables

# Davis Senior High, Davis Joint Unified Language Arts 2006 Multi-Grade Results



For each grade or subject listed, the left bar is the selected school and the right bar is the average of the Top 10 Comparable schools in the state.

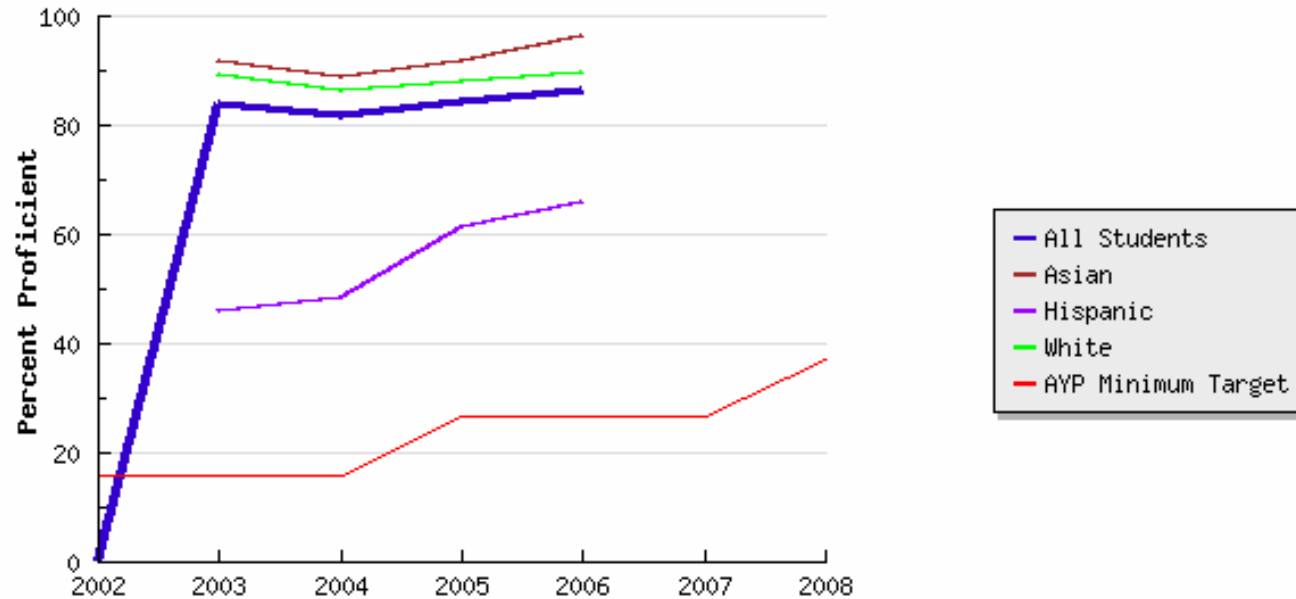
Just for the Kids California - <http://www.jftk-ca.org>

# Davis Senior High, Davis Joint Unified Language Arts Subgroup Comparables Table

School Name (Grade Span) District Name	District Type	All % Proficient and Above	All Students % Proficient and Above	% Low- Income	% EL	% All	Total Students	All Students	Years in Top 10
Davis Senior High (10-12) Davis Joint Unified	Lg City Suburbs	84.2	84.2	10.8	5.4	100.0	535	535	1
Davis Senior High (10-12) Davis Joint Unified	Lg City Suburbs	84.2	84.2	10.8	5.4	100.0	535	535	1
Anderson W. Clark Magnet High (9-12) Glendale Unified	Med City	83.4	83.4	38.8	12.8	100.0	265	265	5
High Tech International (9-11) San Diego Unified	Lg City	83.0	83.0	22.1	11.3	100.0	97	97	1
High Tech High (9-12) Los Angeles Unified	Lg City	81.1	81.1	44.8	5.7	100.0	90	90	1
Tahoe Truckee High (9-12) Tahoe-Truckee Joint Unified	Sm Town	81.0	81.0	17.3	6.0	100.0	198	198	1
Granada Hills Charter High (9-12) Los Angeles Unified	Lg City	78.7	78.7	25.7	6.1	100.0	887	887	2
School of International Studies at San Diego High (9-12) San Diego Unified	Lg City	78.6	78.6	50.7	6.4	100.0	134	134	1
Hawthorne Math and Science Academy High (9-11) Hawthorne	Lg City Suburbs	78.1	78.1	82.4	6.1	100.0	104	104	2
Middle College High (9-12) Lodi Unified	Med City	77.8	77.8	36.1	6.4	100.0	67	67	4
Los Altos High (9-12) Mountain View-Los Altos Union High	Lg City Suburbs	77.3	77.3	14.9	8.1	100.0	438	438	4

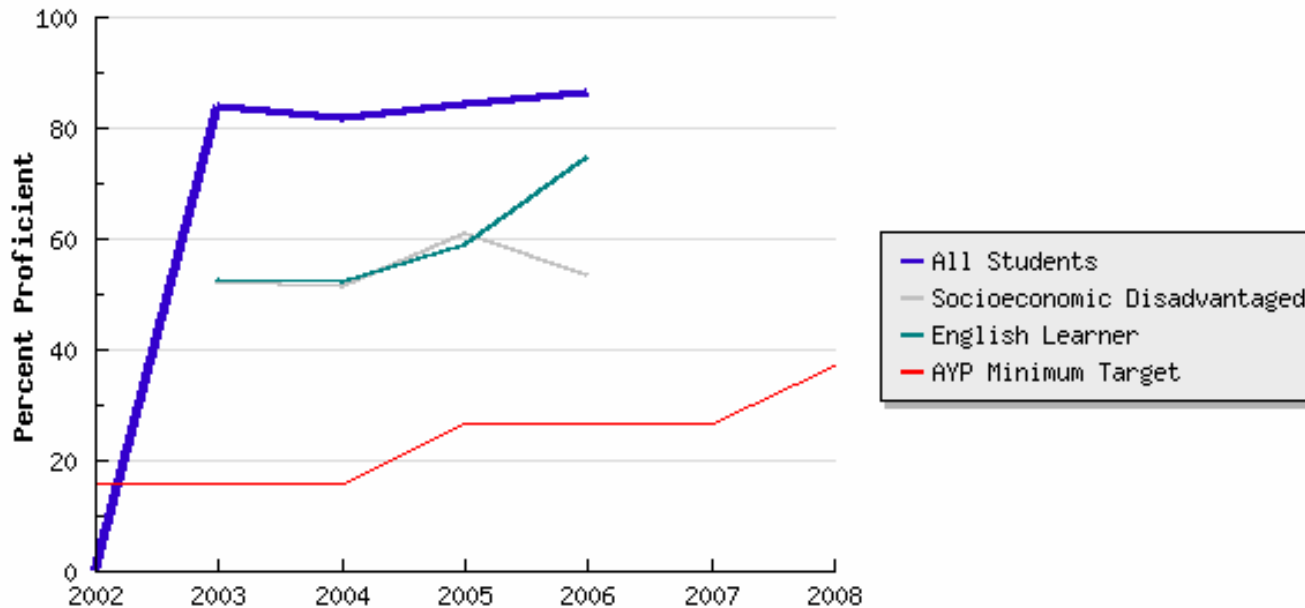
# Davis Senior High, Davis Joint Unified Mathematics Subgroup Performance Summary

<input type="button" value="Update"/>	Subgroup	All Students	Asian	Hispanic	White	Socioeconomic Disadvantaged	English Learner
	Number of Students	535	84	70	350	67	74
	Percent Enrollment	100.0%	15.7%	13.1%	65.4%	12.5%	13.8%
	Include Subgroup	<input checked="" type="checkbox"/>	<input checked="" type="checkbox"/>	<input checked="" type="checkbox"/>	<input checked="" type="checkbox"/>	<input type="checkbox"/>	<input type="checkbox"/>



# Davis Senior High, Davis Joint Unified Mathematics Subgroup Performance Summary

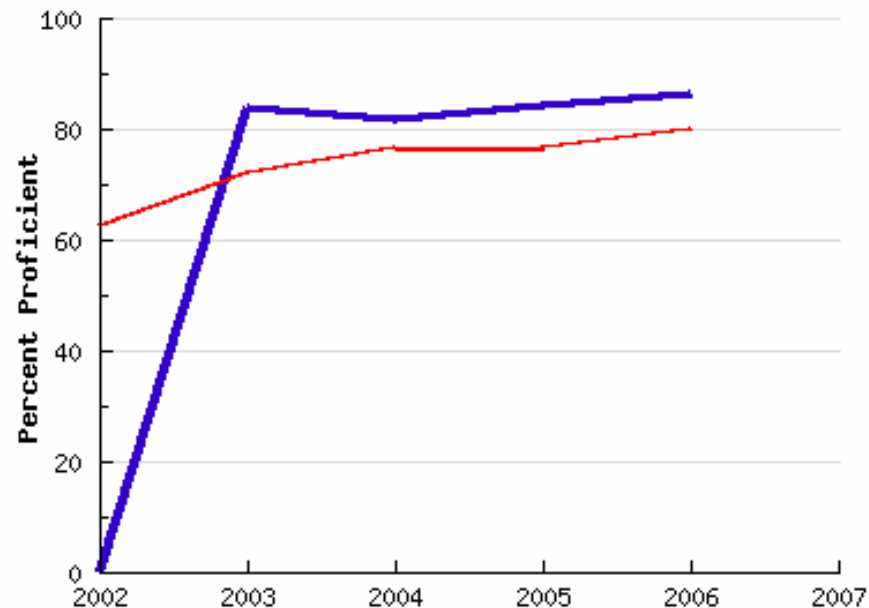
Update	Subgroup	All Students	Asian	Hispanic	White	Socioeconomic Disadvantaged	English Learner
	Number of Students	535	84	70	350	67	74
	Percent Enrollment	100.0%	15.7%	13.1%	65.4%	12.5%	13.8%
	Include Subgroup	<input checked="" type="checkbox"/>	<input type="checkbox"/>	<input type="checkbox"/>	<input type="checkbox"/>	<input checked="" type="checkbox"/>	<input checked="" type="checkbox"/>



# Davis Senior High, Davis Joint Unified Mathematics Subgroup Comparables Performance

Subgroup	All Students	Asian	Hispanic	White	Socioeconomic Disadvantaged	English Learner
Number of Students	535	84	70	350	67	74
Percent Enrollment	100.0%	15.7%	13.1%	65.4%	12.5%	13.8%
Select Subgroup	<input checked="" type="radio"/>	<input type="radio"/>	<input type="radio"/>	<input type="radio"/>	<input type="radio"/>	<input type="radio"/>

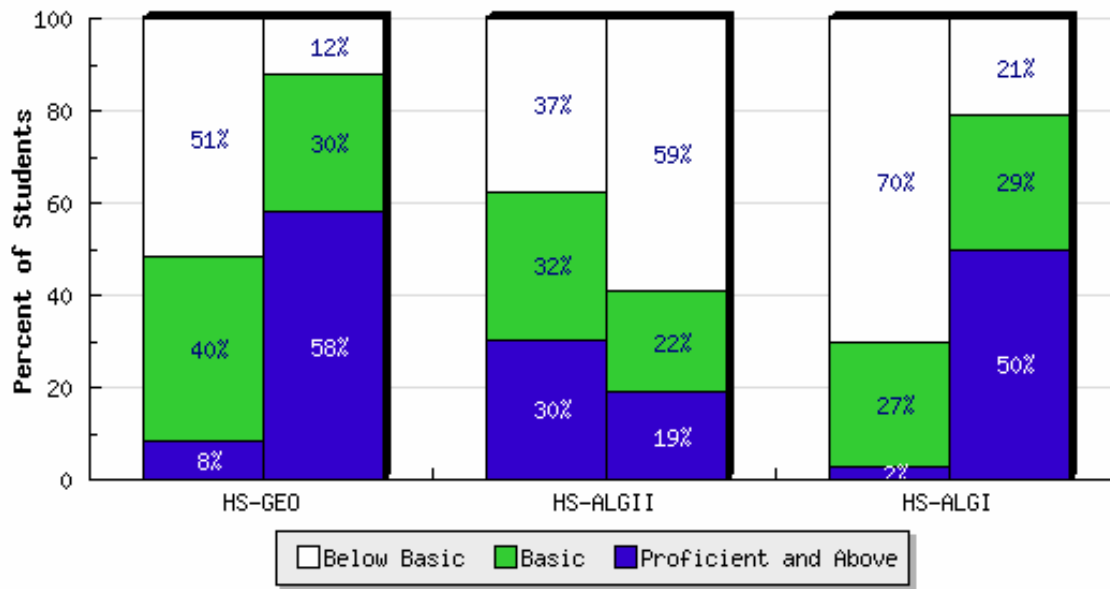
[Update](#)



[Click here to see list of top 10 comparable schools](#)

— Davis Senior High  
— Average of Top 10 comparables

# Davis Senior High, Davis Joint Unified Mathematics 2006 Multi-Grade Results



For each grade or subject listed, the left bar is the selected school and the right bar is the average of the Top 10 Comparable schools in the state.

Just for the Kids California - <http://www.jftk-ca.org>

# DAVIS SENIOR HIGH SCHOOL

## Star 2006

### Algebra 1

		<b>8th Grade Students Tested in Alg I</b>	<b>% 8th Grade Proficient &amp; above</b>	<b>9th Grade Students Tested in Alg I</b>	<b>% 9th Grade Proficient &amp; above</b>	<b>10th Grade Students Tested in Alg I</b>	<b>% 10th Grade Proficient &amp; above</b>	<b>11th Grade Students Tested in Alg I</b>	<b>% 11th Grade Proficient &amp; above</b>	<b>EOC</b>	<b>% EOC Proficient &amp; above</b>
California		229,861	44%	261,508	19%	142,954	10%	72,091	6%	706,414	23%
District		348	79%	157	54%	69	3%	26	4%	601.4	60%
	Emerson	112	87%	49	46%					161	76%
	Harper	109	73%	49	37%					158	62%
	Holmes	117	80%	56	75%					173	79%
	Davis High School					58	2%	20	5%	78	3%
Other District Schools:											
	King High School	No students tested in Algebra 1									
	DSIS	10	ISD	3	ISD	3	ISD	3	ISD	19	31%
	DaVinci High School					7	ISD	2	ISD	9	ISD
ISD = Insufficient data due to small numbers											

# DAVIS SENIOR HIGH SCHOOL

## Star 2006

### Geometry

		<b>8th Grade Students Tested in Geometry</b>	<b>% 8th Grade Proficient &amp; above</b>	<b>9th Grade Students Tested in Geometry</b>	<b>% 9th Grade Proficient &amp; above</b>	<b>10th Grade Students Tested in Geometry</b>	<b>% 10th Grade Proficient &amp; above</b>	<b>11th Grade Students Tested in Geometry</b>	<b>% 11th Grade Proficient &amp; above</b>	<b>EOC</b>	<b>% EOC Proficient &amp; above</b>
California		14,913	80%	112,155	45%	154,608	15%	78,126	7%	359,802	26%
District		133	93%	307	81%	146	11%	33	6%	619	63%
	Emerson	12	100%	146	84%					158	85%
	Harper	46	98%	59	90%					105	94%
	Holmes	74	89%	95	71%					169	79%
	Davis High School					109	10%	23	0%	132	9%
	DaVinci					30	10%	9	ISD	39	13%
Other District Schools:											
	King High School	No students tested in Geometry									
	DSIS	1	ISD	7	ISD	7	ISD	1	ISD	16	44%

ISD = Insufficient data due to small numbers

# Davis Senior High, Davis Joint Unified Mathematics Subgroup Comparables Table

School Name (Grade Span) District Name	District Type	All % Proficient and Above	All Students % Proficient and Above	% Low- Income	% EL	% All	Total Students	All Students	Years in Top 10
Davis Senior High (10-12) Davis Joint Unified	Lg City Suburbs	86.3	86.3	10.8	5.4	100.0	535	535	1
Anderson W. Clark Magnet High (9-12) Glendale Unified	Med City	89.8	89.8	38.8	12.8	100.0	265	265	5
High Tech High (9-12) Los Angeles Unified	Lg City	87.8	87.8	44.8	5.7	100.0	90	90	1
Davis Senior High (10-12) Davis Joint Unified	Lg City Suburbs	86.3	86.3	10.8	5.4	100.0	535	535	1
Temple City High (9-12) Temple City Unified	Lg City Suburbs	83.7	83.7	27.3	16.8	100.0	517	517	4
Hawthorne Math and Science Academy High (9-11) Hawthorne	Lg City Suburbs	78.1	78.1	82.4	6.1	100.0	104	104	1
Cypress High (9-12) Anaheim Union High	Lg City Suburbs	78.0	78.0	11.5	6.1	100.0	603	603	1
Tahoe Truckee High (9-12) Tahoe-Truckee Joint Unified	Sm Town	75.7	75.7	17.3	6.0	100.0	198	198	1
La Quinta High (9-12) Garden Grove Unified	Lg City Suburbs	74.5	74.5	62.0	32.0	100.0	444	444	2
Middle College High (9-12) Lodi Unified	Med City	74.2	74.2	36.1	6.4	100.0	67	67	4
Coast Union High (9-12) Coast Unified	Rural Metro Area	73.8	73.8	30.1	10.8	100.0	84	84	1

# DAVIS SENIOR HIGH SCHOOL

## Disaggregated STAR Results

### April 2006 – All Students

Grade 10, 11 & 12		ELA					MATH					
School Year 2005 - 2006	# Tested	1 - Far Below Basic	2 - Below Basic	3 - Basic	4 - Proficient	5 - Advanced	# Tested	1 - Far Below Basic	2 - Below Basic	3 - Basic	4 - Proficient	5 - Advanced
<b>All Students</b>	1436	8%	7%	14%	22%	49%	1333	7%	17%	27%	32%	17%
<b>Asian</b>	254	2%	2%	13%	19%	63%	248	2%	8%	19%	37%	34%
<b>Hispanic</b>	178	15%	29%	15%	24%	17%	156	17%	33%	29%	15%	5%
<b>African American</b>	47	15%	9%	36%	21%	19%	40	8%	28%	40%	23%	3%
<b>White</b>	920	6%	5%	12%	23%	54%	855	7%	16%	28%	35%	15%
<b>English Learners</b>	79	34%	29%	24%	11%	1%	65	25%	37%	17%	15%	6%
<b>Males</b>	719	11%	7%	15%	22%	45%	657	7%	16%	25%	33%	19%
<b>Females</b>	717	6%	6%	12%	22%	54%	676	7%	18%	28%	32%	14%
<b>Gate</b>	407	2%	0%	2%	14%	82%	383	2%	5%	16%	44%	33%
<b>SES</b>	170	24%	24%	19%	19%	14%	146	18%	32%	24%	23%	3%
<b>RSP</b>	62	31%	27%	21%	18%	3%	49	97%	39%	20%	10%	2%

# DAVIS SENIOR HIGH SCHOOL

## Disaggregated STAR Results

### April 2006 – Grade 10

Grade 10		ELA					MATH					
School Year 2005 - 2006	# Tested	1 - Far Below Basic	2 - Below Basic	3 - Basic	4 - Proficient	5 - Advanced	# Tested	1 - Far Below Basic	2 - Below Basic	3 - Basic	4 - Proficient	5 - Advanced
<b>All Grade 10 Students</b>	526	3%	6%	11%	23%	58%	518	3%	8%	22%	43%	23%
<b>Asian</b>	95	1%	1%	7%	17%	74%	93	0%	2%	10%	48%	40%
<b>Hispanic</b>	64	13%	25%	11%	27%	25%	64	16%	25%	25%	23%	11%
<b>African American</b>	18	0%	6%	44%	33%	17%	17	6%	18%	35%	35%	6%
<b>White</b>	338	2%	3%	9%	23%	63%	333	2%	7%	24%	45%	22%
<b>English Learners</b>	29	24%	38%	21%	17%	0%	28	32%	29%	18%	14%	7%
<b>Males</b>	255	3%	6%	11%	25%	55%	253	2%	9%	21%	43%	25%
<b>Females</b>	271	3%	5%	10%	21%	62%	265	5%	8%	22%	44%	21%
<b>Gate</b>	157	1%	1%	1%	9%	89%	155	1%	1%	12%	47%	39%
<b>SES</b>	63	13%	27%	19%	22%	19%	60	17%	20%	23%	35%	5%
<b>RSP</b>	30	20%	27%	33%	20%	0%	31	23%	39%	23%	13%	3%

# DAVIS SENIOR HIGH SCHOOL

## Disaggregated STAR Results

### April 2006 – Grade 11

Grade 11		ELA					MATH					
School Year 2005 - 2006	# Tested	1 - Far Below Basic	2 - Below Basic	3 - Basic	4 - Proficient	5 - Advanced	# Tested	1 - Far Below Basic	2 - Below Basic	3 - Basic	4 - Proficient	5 - Advanced
<b>All Grade 11 Students</b>	480	9%	9%	18%	21%	43%	433	6%	22%	33%	25%	13%
<b>Asian</b>	77	1%	3%	18%	16%	62%	76	3%	7%	24%	32%	36%
<b>Hispanic</b>	59	24%	22%	20%	22%	12%	46	11%	37%	37%	13%	2%
<b>African American</b>	14	21%	7%	29%	7%	36%	11	0%	18%	55%	27%	0%
<b>White</b>	321	7%	8%	17%	23%	45%	292	7%	24%	35%	25%	10%
<b>English Learners</b>	27	33%	30%	30%	4%	4%	17	12%	41%	24%	12%	12%
<b>Males</b>	232	13%	9%	22%	19%	37%	206	8%	19%	33%	25%	16%
<b>Females</b>	248	6%	8%	14%	22%	50%	227	5%	25%	34%	25%	11%
<b>Gate</b>	137	1%	1%	4%	18%	76%	128	1%	9%	22%	41%	27%
<b>SES</b>	61	25%	26%	23%	13%	13%	45	13%	31%	38%	16%	2%
<b>RSP</b>	16	50%	31%	13%	6%	0%	7	29%	43%	29%	0%	0%

# DAVIS SENIOR HIGH SCHOOL

## Disaggregated STAR Results

### April 2006 – Grade 12

Grade 12		ELA					MATH					
School Year 2005 - 2006	# Tested	1 - Far Below Basic	2 - Below Basic	3 - Basic	4 - Proficient	5 - Advanced	# Tested	1 - Far Below Basic	2 - Below Basic	3 - Basic	4 - Proficient	5 - Advanced
<b>All Grade 12 Students</b>	430	13%	6%	13%	23%	45%	382	13%	24%	25%	26%	12%
<b>Asian</b>	82	4%	4%	16%	24%	52%	79	4%	15%	27%	28%	27%
<b>Hispanic</b>	55	36%	13%	15%	24%	13%	46	26%	41%	26%	7%	0%
<b>African American</b>	15	27%	13%	33%	20%	7%	12	17%	50%	33%	0%	0%
<b>White</b>	261	10%	5%	9%	23%	53%	230	13%	20%	25%	31%	11%
<b>English Learners</b>	23	48%	17%	22%	13%	0%	20	25%	45%	10%	20%	0%
<b>Males</b>	232	17%	6%	13%	22%	42%	198	14%	22%	21%	28%	15%
<b>Females</b>	198	9%	5%	13%	25%	48%	184	12%	26%	30%	23%	9%
<b>Gate</b>	113	4%	0%	1%	14%	81%	100	4%	6%	15%	44%	31%
<b>SES</b>	46	39%	17%	13%	24%	7%	41	27%	49%	10%	15%	0%
<b>RSP</b>	16	31%	25%	6%	25%	13%	11	45%	36%	9%	9%	0%

# DAVIS SENIOR HIGH SCHOOL

## EL Disaggregated STAR Results

### April 2005

Grade 10	ELA						MATH					
School Year 2005 - 2006	# Tested	1 - Far Below Basic	2 - Below Basic	3 - Basic	4 - Proficient	5 - Advanced	# Tested	1 - Far Below Basic	2 - Below Basic	3 - Basic	4 - Proficient	5 - Advanced
<b>Total EL</b>	29	28%	31%	31%	7%	3%	19	5%	42%	21%	21%	11%
<b>Asian</b>	7	0%	43%	43%	0%	14%	7	0%	14%	14%	43%	29%
<b>Pacific Islander</b>	1	0%	0%	100%	0%	0%	0	0%	0%	0%	0%	0%
<b>Hispanic</b>	20	40%	25%	25%	10%	0%	11	9%	55%	27%	9%	0%
<b>White</b>	1	0%	100%	0%	0%	0%	1	0%	100%	0%	0%	0%

# DAVIS SENIOR HIGH SCHOOL

## EL CELDT SCORES

2005-06

EL	Number Tested	Beginning	Early Intermediate	Intermediate	Early Advanced	Advanced
All	91	8	12	17	34	20

Of the 54 EL students scoring Early Advanced or Advanced on CELDT:

<u>Proficiency Level</u>		Beginning	Early Intermediate	Intermediate	Early Advanced	Advanced
	Listening	0	0	5	30	19
	Reading	0	0	5	16	33
	Writing	0	0	12	26	16

### 10th, 11th & 12th Grade EL STUDENTS, 2005-06

EL	91	RFEP	123	IFEP	158	Redesignated - 2005-06	3
----	----	------	-----	------	-----	------------------------	---

# DF Report

## 2005-06 Grades

### ALL 10, 11, & 12 GRADE STUDENTS ENROLLED AT DSHS

	# Without D/F Mark	# of D/F QTR 1	Total Students	%	# Without D/F Mark	# of D/F SEM 1	Total Students	%
DHS	1,218	524	1,742	30%	1,269	455	1,724	26%
DAVINCI	195	55	250	22%	150	46	196	23%
DSIS	67	31	98	32%	37	31	68	46%
Total	1,480	610	2,090	29%	1,456	532	1,988	27%

# DF Report

## 2005-06 Grades

### 10TH GRADE DSHS FULL TIME ONLY

	# Without D/F Mark	# of D/F QTR 1	Tot Ethnic	%	# Without D/F Mark	# of D/F SEM 1	Tot Ethnic	%
Amer Ind/Alaskan	2	3	5	60%	1	3	4	75%
Asian	65	22	87	25%	70	15	85	18%
Pacific Islander	0	6	6	100%	2	4	6	67%
Filipino	1	1	2	50%	1	1	2	50%
Hispanic	24	52	76	68%	30	45	75	60%
African Amer	7	13	20	65%	8	13	21	62%
White	252	131	383	34%	272	107	379	28%
Declined to state	0	2	2	100%	0	1	1	100%
EL	7	26	33	79%	9	22	31	71%

# DF Report

## 2005-06 Grades

### 11TH GRADE DSHS FULL TIME ONLY

	#Without D/F Mark	# of D/F QTR 1	Tot Ethnic	%	#Without D/F Mark	# of D/F SEM 1	Tot Ethnic	%
Amer Ind/Alaskan	1	1	2	50%	1	1	2	50%
Asian	87	14	101	14%	90	10	100	10%
Pacific Islander	2	3	5	60%	1	5	6	83%
Filipino	6	3	9	33%	4	6	10	60%
Hispanic	36	46	82	56%	31	43	74	58%
African Amer	11	12	23	52%	13	10	23	43%
White	299	98	397	25%	302	93	395	24%
Declined to state	5	2	7	29%	7	0	7	0%
EL	13	30	43	70%	16	23	39	59%

# DF Report

## 2005-06 Grades

### 12TH GRADE DSHS FULL TIME ONLY

	# Without D/F Mark	# of D/F QTR 1	Tot Ethnic	%	# Without D/F Mark	# of D/F SEM 1	Tot Ethnic	%
Amer Ind/Alaskan	2	1	3	33%	2	1	3	33%
Asian	77	14	91	15%	79	13	92	14%
Pacific Islander	1	3	4	75%	1	3	4	75%
Filipino	5	0	5	0%	5	0	5	0%
Hispanic	25	25	50	50%	28	23	51	45%
African Amer	11	5	16	31%	10	6	16	38%
White	296	67	363	18%	308	52	360	14%
Declined to state	3	0	3	0%	3	0	3	0%
EL	8	14	22	64%	12	12	24	50%

# DHS 2005-2006 Discipline Numbers

Incident	No. of Incidents	Ethnicity					Gender		Grade		
		White	Hispanic	Black	Asian	Other	Male	Female	10	11	12
Fighting	26	50%	27%	8%	8%	8%	77%	23%	65%	31%	4%
Dangerous Object	2	50%	50%	0%	0%	0%	50%	50%	100%	0%	0%
Used Force	4	25%	25%	50%	0%	0%	50%	50%	75%	0%	25%
Caused Damage	4	100%	0%	0%	0%	0%	50%	50%	25%	75%	0%
Theft	7	14%	43%	14%	29%	0%	29%	71%	29%	43%	29%
Nicotine	5	40%	40%	0%	20%	0%	80%	20%	60%	20%	20%
Controlled Substance	21	71%	10%	10%	10%	0%	52%	48%	29%	19%	52%
Sold Drugs	1	100%	0%	0%	0%	0%	100%	0%	0%	100%	0%
Drug Paraphernalia	3	67%	0%	33%	0%	0%	67%	33%	67%	0%	33%
Obscene Act	3	100%	0%	0%	0%	0%	100%	0%	67%	33%	0%
Disrupted School	85	32%	45%	12%	5%	7%	67%	33%	54%	31%	15%
<b>Total Incidents</b>	<b>161</b>	<b>43%</b>	<b>34%</b>	<b>11%</b>	<b>7%</b>	<b>5%</b>	<b>65%</b>	<b>35%</b>	<b>52%</b>	<b>29%</b>	<b>19%</b>

# DHS Truancy Rate

- 05/06 CBEDS: 1743
- #students 3+days/periods unexcused: 1708
- Truancy Rate: 97.99%
- Total Periods Unexc 104,838
- ADA \$ lost @\$7/period: \$733,866